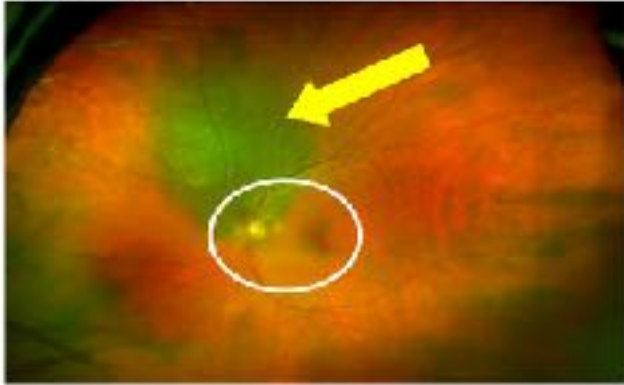




ultra-widefield retinal imaging

When compared to all methods of examining the retinal surface, our experience has been that the Optomap gives us the most complete view of the inside of the eye. This provides early detection for diseases that affect not just your eyes, but your overall health.

Because dilating drops are usually not required for this procedure, the Optomap is quick and convenient.

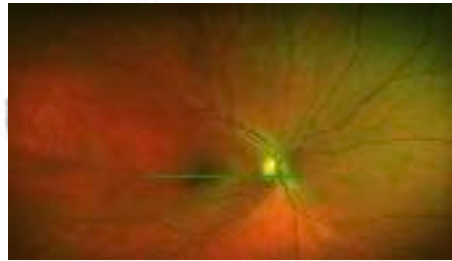


In this Optomap image, the white ring represents the amount of the retina normally seen without dilation. The yellow arrow points to a large melanoma found in this patient's eye with the Optomap.



While the Optomap goes broad, the iVue goes deep. Some problems are visible on the surface of the retina and others exist underneath it.

iVue is a fast and easy optical CT imaging system that lets us look within and below your retina to find early damage from diseases like macular degeneration, glaucoma and diabetes before they can impact your vision.



iWellness Screening \$49

(Bundled imaging saves \$25)

We have paired the Optomap (\$39) and iVue (\$35) technologies into a single iWellness screening package for an exceptional experience. Retinal problems such as glaucoma, macular degeneration, retinal detachments, and diabetic retinopathy can now be seen without dilation for most patients. Early detection is crucial!

Optomap \$39

iVue \$35

iWellness (Optomap+iVue) \$49

Dilation (causes blurred VA, sensitivity to light, +30min)

Decline all

I have been informed by Montrose Eye Care (from the above or verbal explanation) of the importance of iWellness Screening and pupil dilation. If I have chosen 'Decline all' option, I will not hold Montrose Eye Care Optometrist and/or its staff responsible for any diseases or pathology that goes undetected due to the lack of diagnostic information that could have been obtained by these testing procedures.

Patient Name

Patient/Guardian signature

Date

